

## GRANTS SINCE INCEPTION

\$131+ MILLION FROM 2002 TO 2021

Education \$25,383,170

Health/Human Services \$18,870,400

Religion \$16,237,227

Arts & Culture \$15,756,245

Youth Development \$13,805,370

Scholarships \$13,613,698

Library \$12,348,519

Community Development \$11,243,567

Animal & Environment \$2,616,810

Disaster Relief \$1,650,195

The San Angelo Area Foundation is committed to strengthening our community by engaging donors and developing a giving approach that fulfills their vision, charitable goals, and personal passions.

As your philanthropic partner, we provide a streamlined process that allows you to utilize current assets or leave a legacy with a planned gift to create a discretionary, donor advised, field of interest, or scholarship fund that will make a lasting impact.



More than ever before, nonprofits in our community need your support. **San Angelo Gives** is the ideal opportunity for you to be there for them so they can be there for us. We magnify our influence when we join together. **Now is the time for each of us to step up.**

Make **San Angelo Gives** an inspiring success. Join thousands in our community who care about our community. **Give online to your favorite causes on May 3rd.**

Visit [sanangelogives.org](http://sanangelogives.org) to learn more.

### VISION

San Angelo Area Foundation exists to make philanthropic giving in San Angelo and the surrounding area easier and more efficient.

### MISSION

The mission of the San Angelo Area Foundation is to build a legacy of philanthropy by attracting and prudently managing endowment funds that match donor interests with community needs.

#### 2022 BOARD OF DIRECTORS

Camille Yale, Board Chair  
Jay Boyd, CPA, Vice Chair  
Patrick Shannon, Sec./Treas  
Fred Hernandez, Past Chairman  
Jon Bailey  
Jeff Bozeman, CPA  
Lt. Gen (ret) Ronnie Hawkins  
James Huffman, CPA

Brady Johnson  
Flor Leos Madero  
Shelley New  
Gayla Thornton, CPA  
Jane Richardson  
Jana Rueter  
Drew Wallace

#### STAFF

Matt Lewis, President & CEO  
Brianna Killam, CPA, VP of Finance  
Rebecca Reyes Stokes, VP of Programs  
Janet Karcher, VP of Development & Marketing  
Katie Reed, Donor Services & Program Coordinator  
Mason Brooks, Development Director  
Thessaloniam Samarripa, Donor Services Assistant

221 S. Irving, San Angelo, TX 76903  
Phone (325) 947-7071 • Fax (325) 947-7322 • [www.saafound.org](http://www.saafound.org)



SAN ANGELO  
AREA FOUNDATION

ANNUAL  
REPORT  
2021

## LETTER TO THE COMMUNITY

This year, the San Angelo Area Foundation enters our 20th year of working side by side with compassionate donors, serving as a community convener, assisting nonprofits and community partners to inspire ideas and ignite action. With an initial grant from the San Angelo Health Foundation and a collaborative vision of community leaders, the Foundation has continued to see tremendous growth. By engaging new donors, receiving significant gifts into existing funds and working together toward a thriving community, the Foundation has received over \$240 million in contributions and granted more than \$130 million to many great philanthropies in the Concho Valley, resulting in a greater impact than any one of us could make alone.

In a swiftly changing world, volatility of investment returns further amplify the importance of seeing through short-term turbulence. A critical component to achieving long-term objectives is to remain centered on our long-term growth and return over a multi-year outlook philosophy. As a prudent fiduciary, the Foundation continues to focus on quality holdings and long-term performance, allowing endowed funds to distribute 5% of a rolling three-year average to support the charitable causes donors seek to support, even during turbulent times.

Building the spirit of philanthropy with those who love the Concho Valley, **San Angelo Gives** enters our neighbors' hearts, unites donors, and empowers regional organizations to continue doing the work that helps our communities thrive. During some of the most challenging times, we witnessed profound generosity as compassionate donors rallied together, raising a record-breaking \$3.7 million for local charities in 2021. **San Angelo Gives** is one of those days when the best of people truly shines through, and we hope you will join thousands and support your favorite causes on May 3, 2022.

Deeply rooted in the Concho Valley, the Foundation has been blessed to work with donors from all walks of life, representing diverse interests, passions, and reasons for giving. As we celebrate our 20th year, we are humbled by the positive impact created by our donor's charitable visions, and we hope you will continue to work with the Foundation in building a legacy of philanthropy.

Yours Truly

Matt Lewis  
President & CEO

Camille Yale  
Board Chair



**AMY & JOHN MARK  
McLAUGHLIN**  
SAAF's First Major Donors

"We are indeed thankful for the many blessings that have come our way, which make it possible for us to make this gift" John Mark McLaughlin said when he and his wife Amy created their first fund at the San Angelo Area Foundation shortly after its establishment in 2002. Not only were the McLaughlin's dedicated to one another for 57 years before Amy's passing, but their commitment to our community has continued through the charitable impact of this fund.

With a deep desire to improve the quality of life for residents of San Angelo, the McLaughlin's gifted appreciated stock to create a donor advised fund. This type of fund offers flexibility to support causes whose mission aligns with a donor's passions, while ensuring these charitable legacies provide for the future. Comforted with the knowledge that this gift would be faithfully administered and that distributions would make this world a better place for generations to come, the Amy and John Mark McLaughlin Donor Advised Fund has supported causes across all corners of the Concho Valley region and will continue to leave a legacy for causes close to their hearts. Demonstrating the power of prudent management, this fund started with \$2 million in 2002 and has distributed over \$2 million in grants over the past 20 years. Today, this fund has grown to \$4 million and will continue to provide a legacy of charitable support for generations to come.

**This fund started with \$2 million, has distributed more than \$2 million, and has grown to more than \$4 million**

The McLaughlins have committed their lives to our community through their time, talent, and treasure. After Amy's death in 2011, family and friends established the Amy McLaughlin Memorial Scholarship Fund, supporting students from San Angelo who would be attending their alma mater, the University of Texas. Additional scholarship funds have also been created with the San Angelo Area Foundation and we are blessed to work with donors like the McLaughlin family, representing diverse interests, passions, and reasons for giving. As we celebrate 20 years, we consider it a privilege to work with Mr. McLaughlin and his family to continue impacting charities they consider important.

In collaboration with the Center for Infrastructure Assurance and Security and UTSA, **Angelo State University** will be a pilot program for multiple communities to develop a community wide K-12 cybersecurity program. This program will help support local industry and government to be more resilient, and assist local academic institutions develop cybersecurity programs for students.



Delivering primary health and dental care services to the medically underserved of San Angelo and the Concho Valley, **La Esperanza Clinic** can better serve our community with the addition of a new location to further provide affordable health care access to those in need. This new facility will also provide easier access for our neighbors in surrounding communities who are seeking healthcare services.



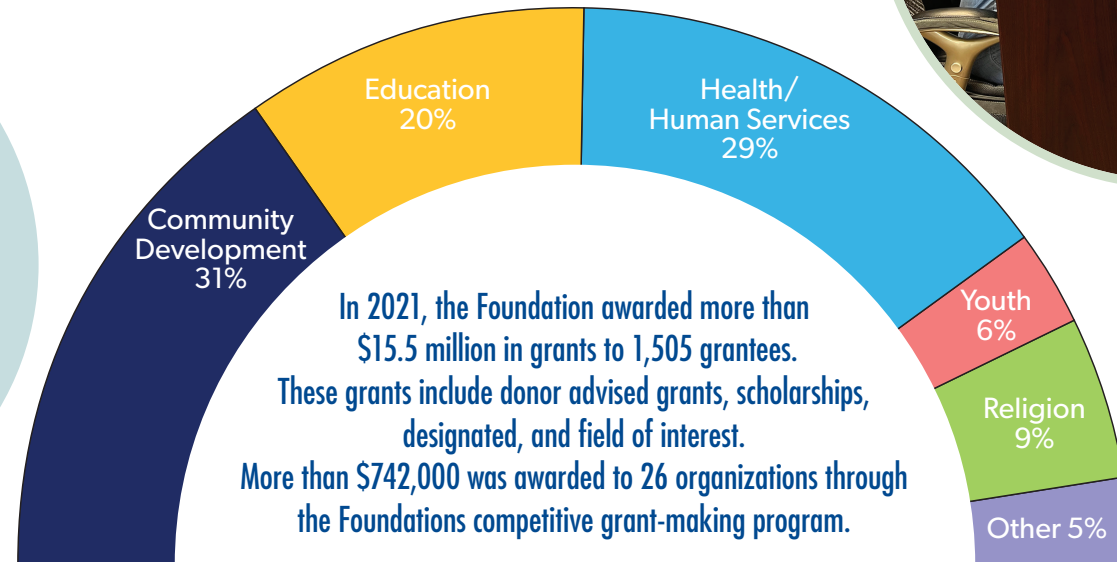
With a mission of assisting medically fragile children in rural communities throughout west Texas the **Joseph Thomas Foundation** can provide physician recommended medical equipment and supplies to Concho Valley families who lack insurance coverage of such expenses. This type of assistance is especially important to reduce the risk these fragile patients face from COVID-19.



Serving San Angelo and the Concho Valley, **Galilee Community Development Corporation** can provide home repairs to low-income homeowners. Without basic repairs some of these homeowners would be forced to move due to safety issues or poor conditions of their home. Additionally, Galilee assists the homeless in our community by helping them obtain proper identification, allowing for additional services to be provided.



Providing realistic hands-on training to McCullough County and the surrounding schools, **Lohn Educational Enrichment Foundation** can provide a virtual educational experience, providing a safe way for students to gain experience in the ever-changing ag, mechanics, and welding fields through a welding simulator.



**WHAT A SAAF GRANT CAN DO**

To learn more about competitive grants and scholarships and to see a complete list of SAAF funds, please visit [www.saafound.org](http://www.saafound.org)

**FINANCIAL HIGHLIGHTS – AS OF DECEMBER 31, 2021**

ASSETS	2021	2020
Cash and Cash Equivalents	\$9,630,600	\$7,093,211
Investments at market	\$195,795,783	\$162,440,109
Beneficial Interest in charitable remainder trust	\$12,483,740	\$9,009,512
Fixed assets at cost (net of accumulated depreciation)	\$3,668,744	\$3,668,175
Oil & Gas interests	\$57,991	\$60,506
Other Assets	\$30,789	\$30,789
<b>Total Assets</b>	<b>\$221,834,647</b>	<b>\$182,302,302</b>

**LIABILITIES AND NET ASSETS**

LIABILITIES	2021	2020
Accounts Payable	\$2,119	\$1,885
Deferred income	0	\$169,591
Grants Payable	\$3,861,355	0
Present Value of Split Interest Trusts	\$2,952,008	\$101,057
Deferred compensation	\$231,778	\$186,280
Funds held as agency endowments	\$54,745,156	\$45,517,106
<b>Total Liabilities</b>	<b>\$61,792,416</b>	<b>\$45,975,919</b>

**NET ASSETS**

Without donor restrictions	\$3,255,390	\$3,122,632
With donor restrictions	\$156,786,841	\$133,203,751
<b>Total Net Assets</b>	<b>\$160,042,231</b>	<b>\$136,326,383</b>

**TOTAL LIABILITIES AND NET ASSETS**

2021	\$221,834,647
2020	\$182,302,302

**Summarized Statement of Activities (net of agency funds)**

**REVENUES, GAINS AND OTHER SUPPORT**

Contributions	\$18,774,003	\$9,285,025
Investment Income	\$5,777,972	\$1,738,700
Net realized/unrealized gains (losses) on investments	\$11,309,103	\$7,783,950
Other Income	\$226,508	\$153,152
<b>Total Revenue, Gains and Other Support</b>	<b>\$36,087,586</b>	<b>\$18,960,827</b>

**GRANTS AND EXPENSES (net of agency funds)**

Grants, distributions and program expenses	\$14,771,620	\$9,169,098
Management and general expenses	\$598,397	\$565,294
Fundraising expenses	\$459,721	\$377,774
<b>Total Grants and Expenses</b>	<b>\$15,829,738</b>	<b>\$10,112,166</b>

Change in value of split interest agreements	\$3,458,000	\$(1,817,588)
--	-------------	---------------

**CHANGE IN NET ASSETS**

<b>NET ASSETS AT BEGINNING OF YEAR</b>	<b>\$136,326,383</b>	<b>\$129,295,310</b>
<b>NET ASSETS, END OF YEAR</b>	<b>\$160,042,231</b>	<b>\$136,326,383</b>

The financial information on this page has been summarized by management from the financial statements of the San Angelo Area Foundation. SAAF financial statements are audited annually by Condley and Company, LLP, of Abilene, Texas an independent public accounting firm. Copies of the audit are available upon request from the Foundation office.